

2010 STATE OF CHATTANOOGA REGION REPORT: PUBLIC SAFETY

the Ochs Center for metropolitan studies
July 2010



State of Chattanooga Region Report



Purpose

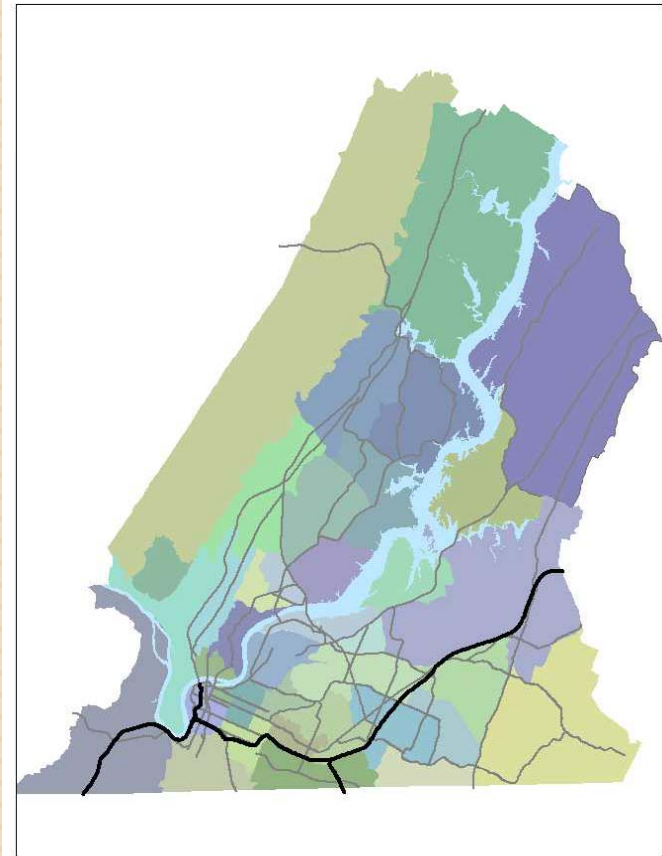
To provide reliable information and indicators on a wide range of issues in the Chattanooga Region for elected officials, government agencies, nonprofits, community leaders and residents.

State of Chattanooga Region Report



- Bi-Annual: 2006, 2008, 2010

- Six Reports:
 - Public Safety
 - Education
 - Health
 - Economy
 - Housing
 - Demographics



State of Chattanooga Region Report

Analysis at MSA, Hamilton County and Neighborhood levels

SOCRR: Hamilton County Survey

	Very Important 2010	Very Important 2008	Very Important 2006
Safety from crime	91%	90%	87%
Quality health care and hospitals	90%	89%	86%
Quality schools	83%	83%	79%
Availability of jobs that pay a livable wage	83%	81%	77%
Clean air	82%	83%	78%
Clean streets and neighborhoods	80%	80%	76%
Affordability of housing	75%	74%	72%
A place where people of all backgrounds are welcome	70%	72%	66%
A strong religious community	63%	63%	58%
A strong sense of community	61%	64%	63%
Parks and other outdoor recreational opportunities	59%	61%	56%
Short commuting time	44%	52%	47%
Arts and cultural opportunities	42%	46%	38%

Public Safety Data Sources



- **FBI Uniform Crime Report**

- For comparing violent and property crime across jurisdictions.

- **TBI**

- Data for comparing Group A and Group B arrests in Hamilton County jurisdictions and crime victims in Hamilton County

- **Chattanooga Police Department and Hamilton County Sheriff**

- Address level data on all reported incidents and arrests in 2008 and 2009

- **Tennessee Department of Corrections**

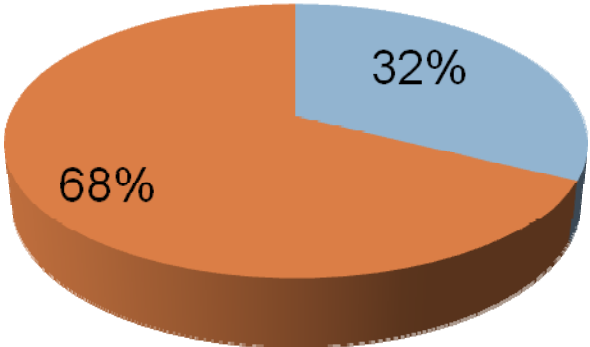
- Data on population and demographics of state prisoners and offenders released from prison

Crime in the Chattanooga Region



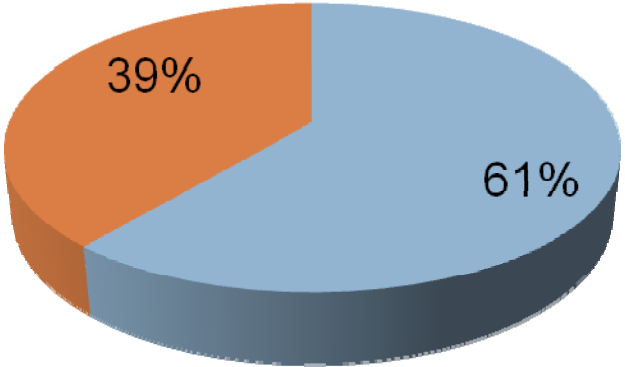
MSA Violent and Property Crime

Population

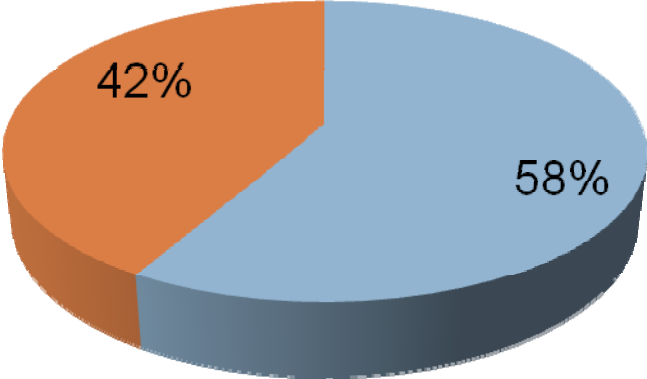


■ City of Chattanooga

Violent Crime



Property Crime



Source: FBI UCR Data, 2008

MSA: Change in Number of Offenses 2003-2008

	City of Chattanooga	Rest of MSA
Violent Crime	-5.0%	2.8%
Murder	5.3%	-11.1%
Forcible Rape	-29.2%	-2.0%
Robbery	10.1%	-5.7%
Aggravated Assault	-8.6%	4.6%
Property Crime	-1.7%	4.6%
Burglary	20.6%	15.6%
Larceny	-4.0%	1.8%
Motor Vehicle Theft	-23.9%	-2.6%
Total	-2.1%	4.4%

Source: FBI UCR Data, 2003 and 2008

MSA: Greatest Increases and Decreases

INCREASE

Jurisdiction	2003	2008	% Change
Signal Mtn	45	75	66.7%
Soddy Daisy	372	553	48.7%
South Pittsburg	78	98	25.6%
Kimball	85	103	21.2%
Collegedale	275	333	21.1%

DECREASE

Jurisdiction	2003	2008	% Change
Jasper	141	78	-44.7%
Sequatchie Co.	197	126	-36%
Lookout Mtn (TN)	19	13	-31.6%
Rossville	284	228	-19.7%
Whitwell	95	85	-10.5%

Source: FBI UCR Data, 2003 and 2008

MSA: Admissions to Prison



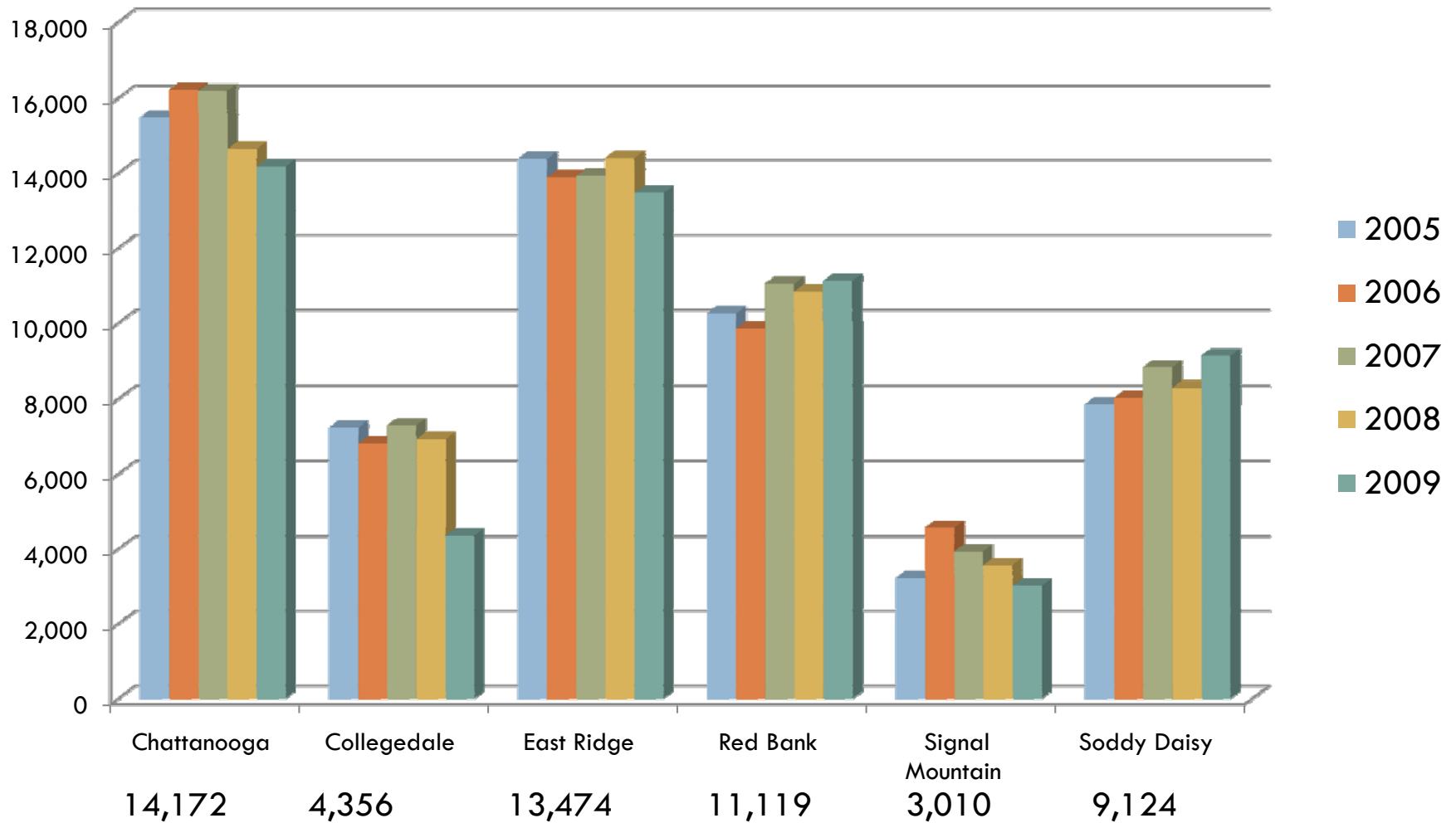
	2009 Prison Admissions	% of MSA Admissions	% of MSA Population
Hamilton	339	48.4%	64.3%
Walker	157	22.4%	12.4%
Catoosa	117	16.7%	12.2%
Dade	40	5.7%	5.4%
Marion	31	4.4%	3.1%
Sequatchie	16	2.3%	2.7%
TOTAL	700	100.0%	100.0%

Source: Tennessee and Georgia Department of Corrections, 2009

Crime in Hamilton County



Crime Rates per 100,000 Residents, 2005-2009 (TBI Data)



Victimization

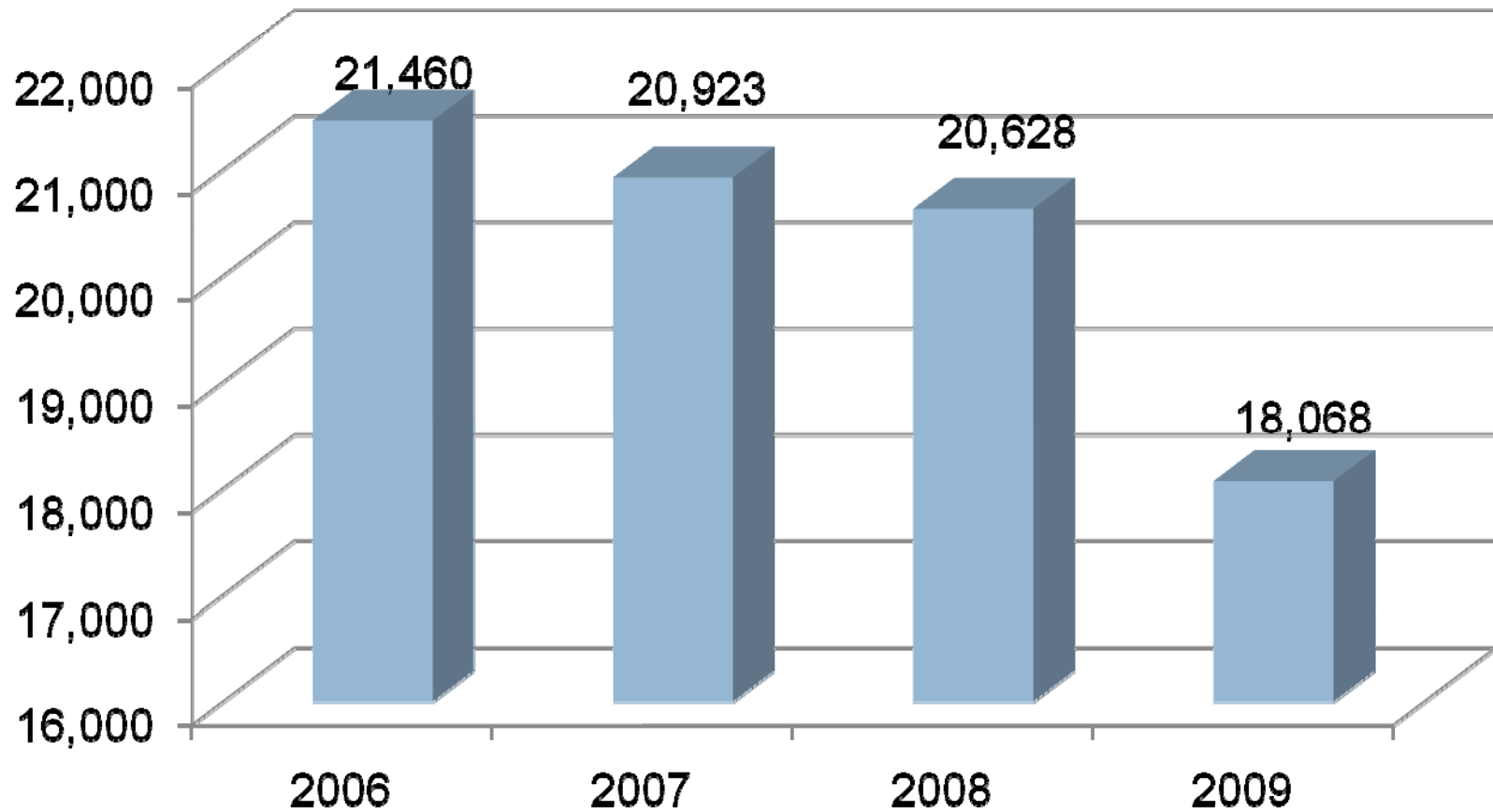
Hamilton County			City of Chattanooga		
	2009 Victims	Population		2009 Victims	Population
Race/Ethnicity			Race/Ethnicity		
White	67.3%	76.8%	White	58.2%	59.2%
African American	30.8%	20.1%	African American	39.8%	35.9%
Latino	2.8%	3.1%	Latino	3.2%	4.1%
Age			Age		
Under 18	7.5%	22.3%	Under 18	5.5%	24.2%
18 – 24	19.2%	9.5%	18 – 24	20.6%	7.6%
25 – 34	23.6%	11.9%	25 – 34	25.1%	13.6%
35 – 44	18.4%	13.3%	35 – 44	18.4%	12.3%
45 - 54	15.4%	15.2%	45 - 54	18.1%	14.4%
55 – 64	9.5%	13.1%	55 – 64	9.4%	12.4%
65 and older	6.5%	14.6%	65 and older	6.2%	15.1%
Sex			Sex		
Male	48.6%	48.0%	Male	47.1%	46.7%
Female	51.4%	52.0%	Female	52.9%	53.3%

Source: TBI Victim Data, 2009

Victimization

- Crime victims in Hamilton County were more likely to be women, white and between the ages of 18-44.
- African Americans and those between the ages of 18 and 34 are significantly overrepresented among crime victims
- 58% of African American crime victims were 34 years old or younger, compared with 47% of white crime victims
- 41% of crime victims under the age of 18 were African American

Arrests in Hamilton County, All Jurisdictions



Source: TBI Victim Data

Arrests in Hamilton County: Top Ten Offenses

Offense	Amount	% Total
Drug/Narcotic Violations	1,896	10.5%
Simple Assault	1,820	10.1%
Theft - Shoplifting	1,628	9.0%
DUI	805	4.5%
Family-Non Violent	788	4.4%
Aggravated Assault	674	3.7%
Drunkenness	616	3.4%
Disorderly Conduct	565	3.1%
Bad Checks	435	2.4%
Burglary	387	2.1%
Other Group B Arrests	5,237	29.0%
Subtotal: Top Ten and Other Group B	14,851	82.2%
TOTAL ARRESTS	18,060	100.0%

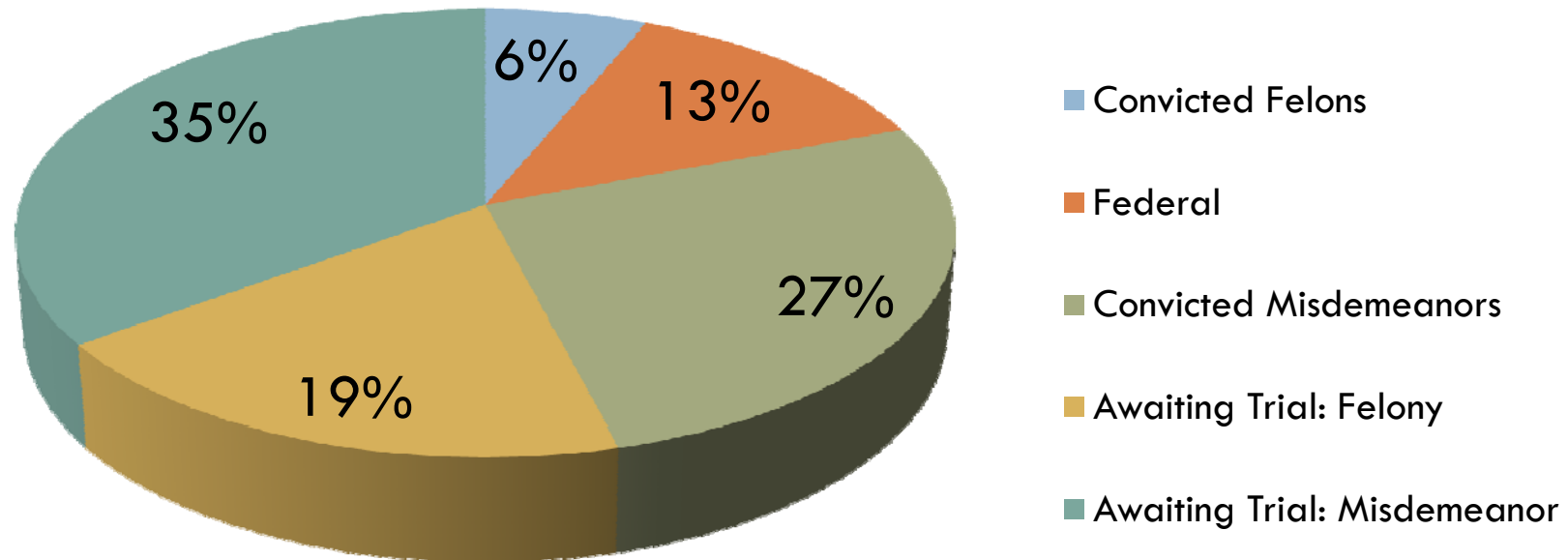
Source: TBI Data, 2009

Hamilton County Arrests: Race, Age and Gender (TBI)

	Group A	Group B	Population
White	55.2%	57.5%	76.8%
African American	44.0%	41.7%	20.1%
Latino	2.0%	2.5%	3.1%
Age			
Under 18	13.0%	5.5%	22.3%
18-24	13.0%	27.7%	9.5%
25-34	25.3%	31.0%	11.9%
35-44	15.9%	20.2%	13.3%
45-54	9.0%	11.6%	15.2%
55-64	2.9%	3.4%	13.1%
65 and older	0.6%	0.6%	14.6%
Gender			
Male	68.6%	74.1%	48.0%
Female	31.4%	25.9%	52.0%

Incarceration: County Jail

Population of Hamilton County Jail and Silverdale by Category



- 74.6% of individuals admitted to jail were there for two days or less
- 8.9% stayed in jail for two or more weeks
- African Americans accounted 45.6% of all arrests, but 55.5% of jail stays longer than two weeks

Source: Hamilton County Sherriff and Tennessee Dept. of Corrections, 2009

Incarceration: State Prison

Prison Admissions from Hamilton County by Offense

	2006-2007	%	2008-2009	%
Robbery	124	14.3%	126	18.8%
Burglary	135	15.6%	120	17.9%
Fraud/Theft	153	17.6%	105	15.6%
Drugs	166	19.1%	97	14.4%
Assault/Weapon	127	14.6%	87	12.9%
Homicide	41	4.7%	55	8.2%
Other	52	6.0%	40	6.0%
Sex	24	2.8%	31	4.6%
DUI	17	2.0%	11	1.6%

Source: Tennessee Department of Corrections, 2006-2009

Incarceration: State Prison Releases

Offenders Released to Hamilton County

	2006	2007	2008	2009
	n=525	n=511	n=363	n=360
Expiration	33.9%	35.6%	39.7%	39.7%
Parole	29.9%	29.7%	25.1%	25.1%
Probation	22.9%	20.0%	20.4%	20.4%
Community Corrections	8.6%	11.7%	11.0%	11.0%
Other Jurisdictions	4.8%	2.9%	3.9%	3.9%

- Nearly 40% of individuals returning from prison were released without supervision at the expiration of their sentence

Source: Hamilton County Sherriff

Does Chattanooga have a lot of
Crime?

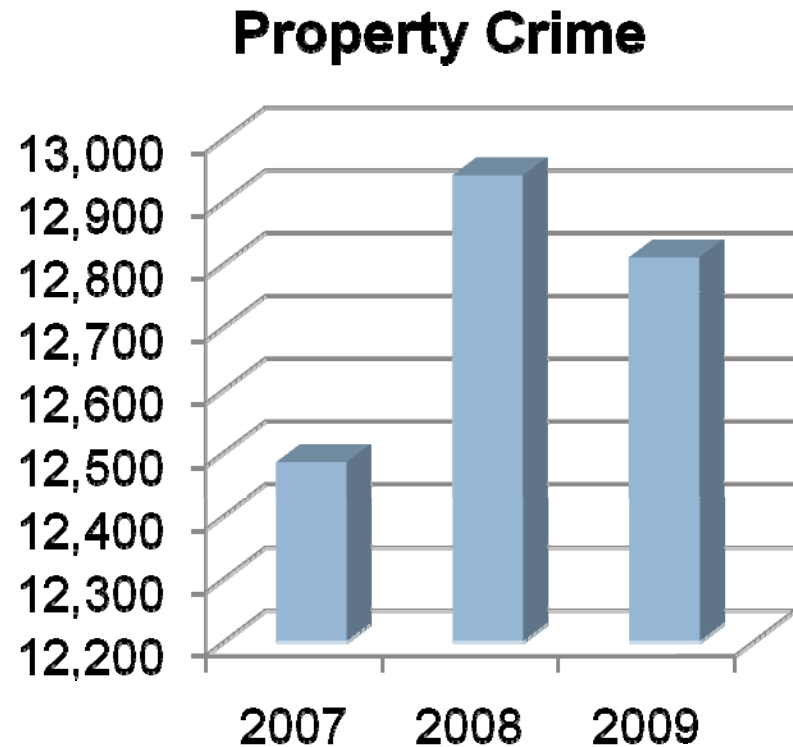
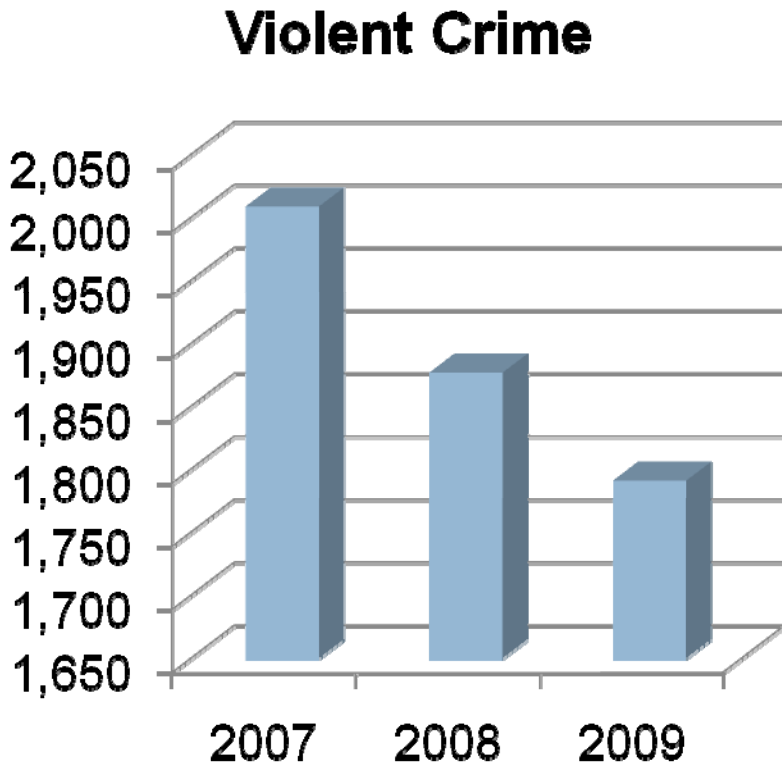
Comparison: Benchmark Cities

2009	City Violent Crime	City Property Crime	City Murder
Chattanooga	1,038.0	7,424.5	9.9
Nashville	1,128.5	4,738.1	12.6
Knoxville	1,055.2	6,351.9	11.8
Memphis	1,805.0	7,065.7	19.8
Huntsville	651.7	5,481.5	7.3
Salem	370.8	3,999.9	3.2
Boise	259.6	2,777.1	3.4
Allentown	697.9	4,910.3	12.1
Fort Wayne	348.2	3,728.0	7.2
Columbia	1,023.6	5,757.6	10.2
Winston-Salem	752.9	5,969.4	6.5
AVERAGE	830.1	5,291.3	9.4

- Chattanooga had the fourth highest violent crime rate, behind Memphis, Nashville, and Knoxville
- Chattanooga had the highest property crime rate
- Chattanooga's property crime rate was 40% higher than the average for all benchmark cities

Source: FBI UCR Data, 2009

Chattanooga: Changes in Reported Offenses



- Violent crimes declined by 10.9% between 2007 and 2009
- Property crimes have increased by 2.6% between 2007 and 2009

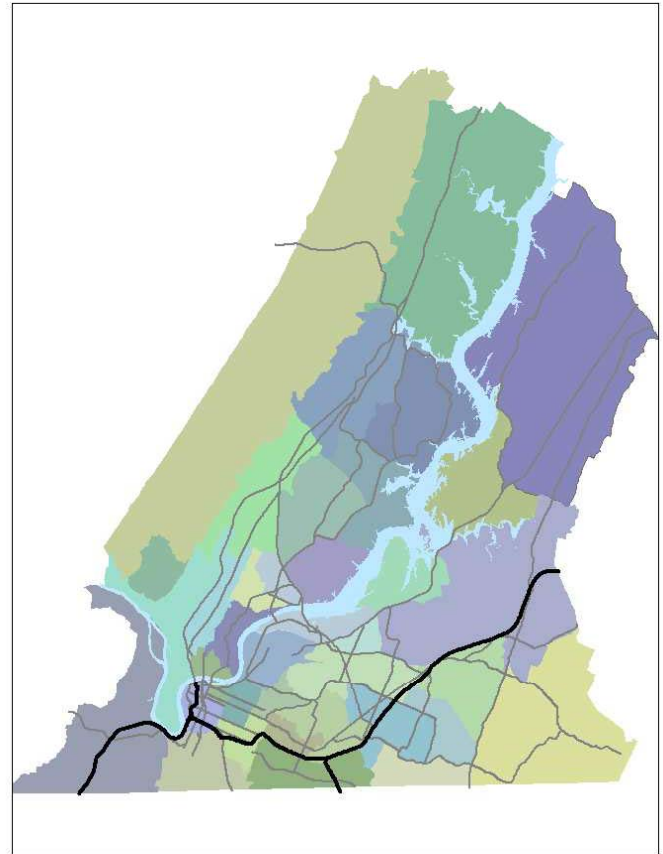
Source: FBI UCR Data, 2009

Comparison: Top 20 Crime Rates for Cities with populations of 100,000 or More

1	St. Louis	10,401.8
2	Little Rock	9,791.0
3	Springfield (MO)	9,708.4
4	Birmingham	9,223.2
5	Memphis	8,870.7
6	Salt Lake City	8,726.0
7	Orlando	8,579.4
8	Jackson	8,505.3
9	Columbus	8,504.3
10	Fayetteville (NC)	8,491.1
11	Chattanooga	8,462.6
12	St. Petersburg	8,382.7
13	Tacoma	8,050.8
14	Flint	7,734.4
15	Lafayette	7,522.8
16	Detroit	7,466.3
17	New Haven	7,460.8
18	Knoxville	7,407.1
19	Baton Rouge	7,383.5
20	Atlanta	7,362.6

Source: FBI UCR Data, 2009

Crime in Hamilton County Neighborhoods



Neighborhood Crime: Robbery

- Top Five Robbery Rates, 2009:

1. Ridgedale/Oak Grove/Clifton Hills - 1,103
2. Dupont/Murray Hills - 829
3. Amnicola/East Chattanooga - 825
4. Woodmore/Dalewood - 800
5. Downtown - 747

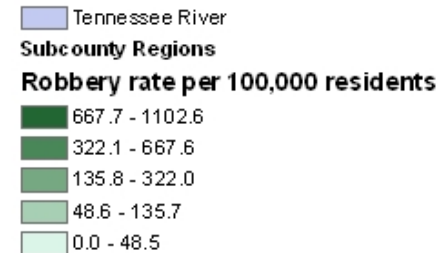
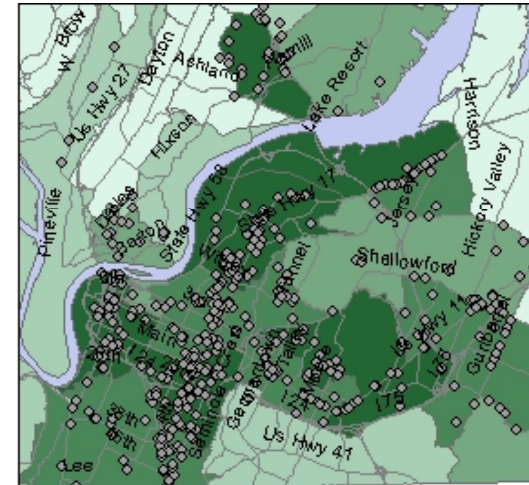
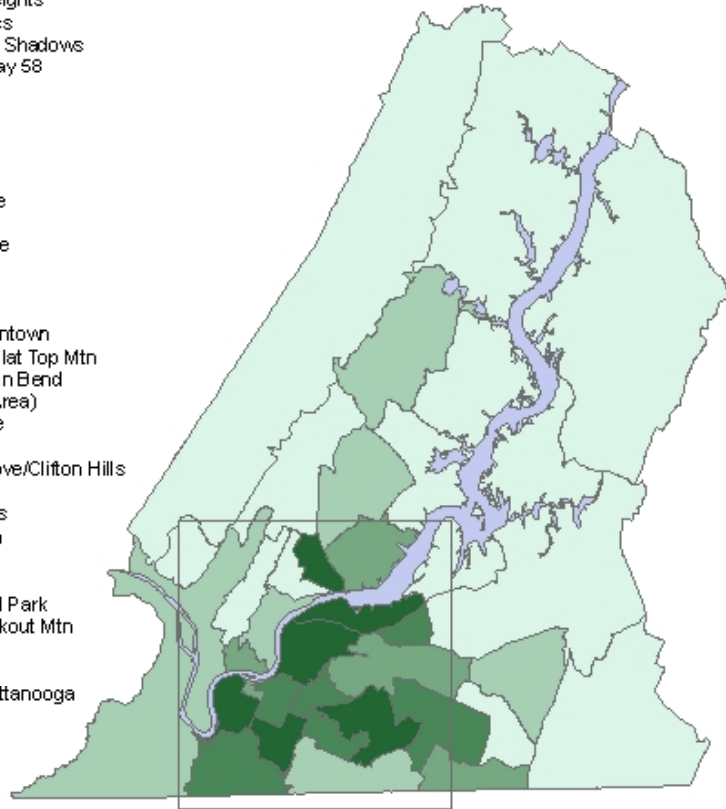
(Rates per 100,000)

Source: Chattanooga Police Department and Hamilton County Sheriff

Neighborhood Crime Rate Per 100,000 Residents by Neighborhood (2009)

Robbery

- ID Neighborhood Name
- 1 East Ridge
- 2 Hickory Valley/Hamilton Place
- 3 North Chattanooga/Hill City/UTC
- 4 Woodmore/Dalewood
- 5 Riverview/Stuart Heights
- 6 Lupton City/Norcross
- 7 Westview/Mountain Shadows
- 8 Bonny Oaks/Highway 58
- 9 Tyner/Greenwood
- 10 Harrison Bay
- 11 Birchwood
- 12 Apison
- 13 East Brainerd
- 14 Dallas Bay/Lakesite
- 15 Hixson
- 16 Northgate/Big Ridge
- 17 Harrison
- 18 Soddy Daisy
- 19 Bakewell
- 20 Falling Water/Browntown
- 21 Walden/Mowbray/Flat Top Mtn
- 22 Mtn Creek/Moccasin Bend
- 23 Signal Mtn (Town Area)
- 24 Glenwood/Eastdale
- 25 Collegedale
- 26 Ridgedale/Oak Grove/Clifton Hills
- 27 Downtown
- 28 Dupont/Murray Hills
- 29 South Chattanooga
- 30 Red Bank
- 31 Brainerd
- 32 Bushtown/Highland Park
- 33 Lookout Valley/Lookout Mtn
- 34 Odteveh/Summit
- 35 Middle Valley
- 36 Annicola/East Chattanooga



Data from each local police department was not available. Chattanooga Police and Sheriff Department data files were geocoded by address location of the crime and aggregated to the neighborhood level. Approximately 98% of addresses were coded. In some cases, specific address locations were not included in the files or street address locations were not available. For Collegedale, East Ridge, Lookout Mountain, Red Bank, Signal Mountain and Soddy Daisy, complaint data from the 2009 TBI Report was used to supplement data at the neighborhood level. For these police departments, address level data was not available. Census 2000 is the source of population totals.

Neighborhood Changes: Robbery

Decreases				Increases			
Subregion	2005	2009	Change	Subregion	2005	2009	Change
Middle Valley	1	0	-100.0%	Dupont/Murray Hills	11	69	527.3%
Harrison Bay	1	0	-100.0%	Northgate/Big Ridge	2	10	400.0%
Red Bank	11	3	-72.7%	Lookout Valley/Lookout Mountain	2	7	250.0%
Collegedale	20	8	-60.0%	Woodmore/Dalewood	31	91	193.5%
Signal Mountain	5	2	-60.0%	Amnicola/East Chattanooga	28	67	139.3%
Westview/Mountain Shadows	7	3	-57.1%	Hixson	4	9	125.0%
Ooltewah/Summit	2	1	-50.0%	Harrison	1	2	100.0%
North Chattanooga/Hill City/ UTC	31	19	-38.7%	Falling Water/Browntown	1	2	100.0%
Ridgedale/Oak Grove/Clifton Hills	121	92	-24.0%	Riverview/Stuart Heights	4	7	75.0%
				East Ridge	17	28	64.7%
				Downtown	32	52	62.5%
				East Brainerd	10	16	60.0%
				Tyner/Greenwood	18	28	55.6%
				Brainerd	34	52	52.9%
				Bakewell	2	3	50.0%
				Soddy Daisy	6	9	50.0%
				Glenwood/Eastdale	26	38	46.2%
				Bony Oaks	22	32	45.5%
				Hickory Valley/Hamilton Place	47	58	23.4%

Neighborhood Crime: Aggravated Assault

□ Top Five Aggravated Assault Rates, 2009:

1. Downtown - 1,839
2. Ridgedale/Oak Grove/Clifton Hills - 1,822
3. Amnicola/East Chattanooga - 1,749
4. South Chattanooga - 1,270
5. Bushtown/Highland Park - 1,145

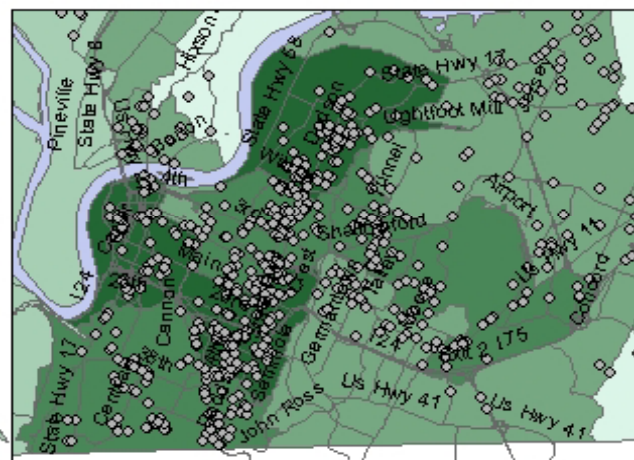
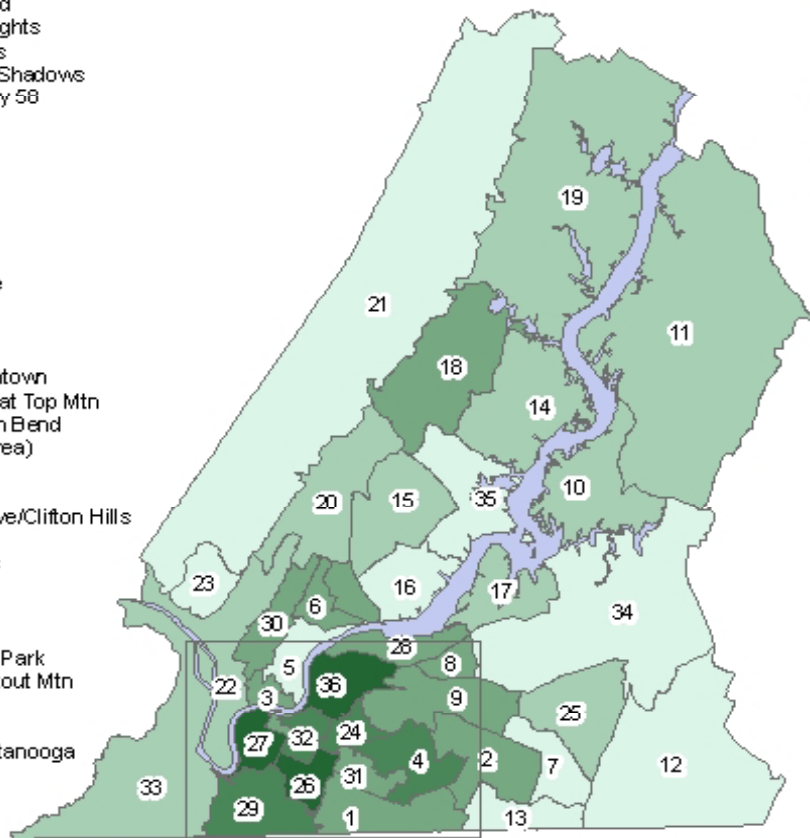
(Rates per 100,000)

Source: Chattanooga Police Department and Hamilton County Sheriff

Neighborhood Crime Rate Per 100,000 Residents by Neighborhood (2009)

Aggravated Assault

- | | |
|----|-----------------------------------|
| ID | Neighborhood Name |
| 1 | East Ridge |
| 2 | Hickory Valley/Hamilton Place |
| 3 | North Chattanooga/Hill City/UTC |
| 4 | Woodmore/Dalewood |
| 5 | Riverview/Stuart Heights |
| 6 | Lupton City/Norcross |
| 7 | Westview/Mountain Shadows |
| 8 | Bonny Oaks/Highway 58 |
| 9 | Tyner/Greenwood |
| 10 | Harrison Bay |
| 11 | Birchwood |
| 12 | Apison |
| 13 | East Brainerd |
| 14 | Dallas Bay/Lakesite |
| 15 | Hixson |
| 16 | Northgate/Big Ridge |
| 17 | Harrison |
| 18 | Soddy Daisy |
| 19 | Bakewell |
| 20 | Falling Water/Browntown |
| 21 | Walden/Mowbray/Flat Top Mtn |
| 22 | Mtn Creek/Moccasin Bend |
| 23 | Signal Mtn (Town Area) |
| 24 | Glenwood/Eastdale |
| 25 | Collegedale |
| 26 | Ridgedale/Oak Grove/Clifton Hills |
| 27 | Downtown |
| 28 | Dupont/Murray Hills |
| 29 | South Chattanooga |
| 30 | Red Bank |
| 31 | Brainerd |
| 32 | Bushtown/Highland Park |
| 33 | Lookout Valley/Lookout Mtn |
| 34 | Ooltewah/Summit |
| 35 | Middle Valley |
| 36 | Annicola/East Chattanooga |



Tennessee River

Subcounty Regions

Aggravated assault rate per 100,000 residents

- 1270.4 - 1839.1
- 794.7 - 1270.3
- 291.1 - 794.6
- 153.6 - 291.0
- 0.0 - 153.5

Data from each local police department was not available. Chattanooga Police and Sheriff Department data files were geocoded by address location of the crime and aggregated to the neighborhood level. Approximately 98% of addresses were coded. In some cases, specific address locations were not included in the files or street address locations were not available. For Collegedale, East Ridge, Lookout Mountain, Red Bank, Signal Mountain and Soddy Daisy, complaint data from the 2009 TBI Report was used to supplement data at the neighborhood level. For these police departments, address level data was not available. Census 2000 is the source of population totals.

Neighborhood Changes: Aggravated Assault

Decreases

Subregion	2005	2009	Change
Mountain Creek/Moccasin Bend	34	13	-61.8%
Collegedale	44	22	-50.0%
Harrison	25	16	-36.0%
Riverview/ Stuart Heights	9	6	-34.5%
Soddy Daisy	59	39	-33.3%
Northgate/ Big Ridge	10	7	-30.2%
East Brainerd	13	10	-23.1%

Increases

Subregion	2005	2009	Change
Bonny Oaks/ Hwy 58	18	33	83.3%
Tyner/Greenwood	32	57	78.1%
Amnicola/East Chattanooga	84	142	69.0%
Woodmore/Dalewood	69	111	60.9%
Hickory Valley/Hamilton Place	37	54	45.9%
Brainerd	43	61	41.9%
East Ridge	118	164	39.0%
Downtown	100	128	28.0%
Signal Mountain	4	5	25.0%
Hixson	25	31	24.0%
Harrison Bay	10	12	20.0%

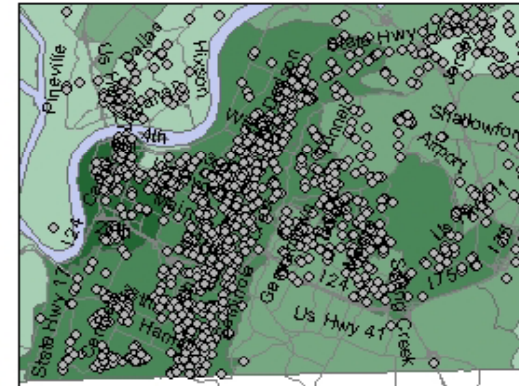
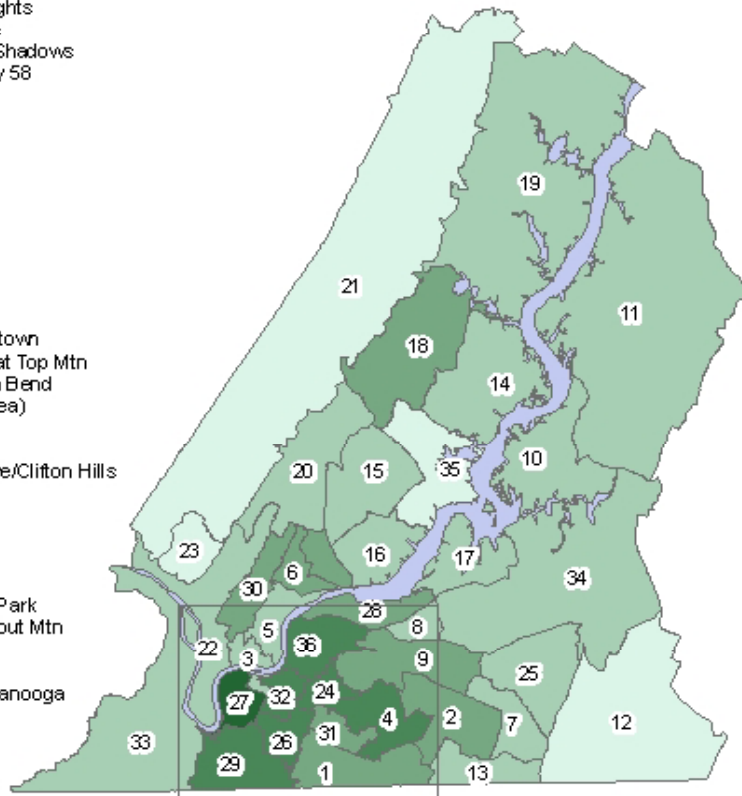
Neighborhood Crime: Simple Assault

- Top Five Simple Assault Rates, 2009:
 1. Downtown - 5,374
 2. Amnicola/East Chattanooga - 3,388
 3. Ridgedale/Oak Grove/Clifton Hills - 3,140
 4. Bushtown/Highland Park - 2,816
 5. South Chattanooga - 2,556

Neighborhood Crime Rate Per 100,000 Residents by Neighborhood (2009)

Simple Assault

- ID Neighborhood Name
- 1 East Ridge
- 2 Hickory Valley/Hamilton Place
- 3 North Chattanooga/Hill City/UTC
- 4 Woodmore/Dalewood
- 5 Riverview/Stuart Heights
- 6 Lupton City/Norcross
- 7 Westview/Mountain Shadows
- 8 Bonny Oaks/Highway 58
- 9 Tyner/Greenwood
- 10 Harrison Bay
- 11 Birchwood
- 12 Apison
- 13 East Brainerd
- 14 Dallas Bay/Lakesite
- 15 Hixson
- 16 Northgate/Big Ridge
- 17 Harrison
- 18 Soddy Daisy
- 19 Bakewell
- 20 Falling Water/Browntown
- 21 Walden/Mowbray/Flat Top Mtn
- 22 Mtn Creek/Moccasin Bend
- 23 Signal Mtn (Town Area)
- 24 Glenwood/Eastdale
- 25 Collegedale
- 26 Ridgedale/Oak Grove/Clifton Hills
- 27 Downtown
- 28 Dupont/Murray Hills
- 29 South Chattanooga
- 30 Red Bank
- 31 Brainerd
- 32 Bushtown/Highland Park
- 33 Lookout Valley/Lookout Mtn
- 34 Ooltewah/Summit
- 35 Middle Valley
- 36 Annicola/East Chattanooga



Tennessee River

Subcounty Regions

Simple assault rate per 100,000 residents

- 3388.1 - 5373.6
- 2241.5 - 3388.0
- 1188.2 - 2241.4
- 326.3 - 1188.1
- 22.8 - 326.2

Data from each local police department was not available. Chattanooga Police and Sheriff Department data files were geocoded by address location of the crime and aggregated to the neighborhood level. Approximately 98% of addresses were coded. In some cases, specific address locations were not included in the files or street address locations were not available. For Collegedale, East Ridge, Lookout Mountain, Red Bank, Signal Mountain and Soddy Daisy, complaint data from the 2009 TBI Report was used to supplement data at the neighborhood level. For these police departments, address level data was not available. Census 2000 is the source of population totals.

Neighborhood Changes: Simple Assault

Decreases	Subregion	2005	2009	Change
	North Chattanooga/Hill City/ UTC	123	75	-39.0%
	Collegedale	145	90	-37.9%
	Harrison Bay	66	43	-34.8%
	Harrison	121	80	-33.9%
	Birchwood	67	45	-32.8%
	Middle Valley	77	57	-26.0%
	Bonny Oaks/Hwy 58	93	72	-22.6%
	Walden/ Mowbrav Mtn/ Flat Top	32	25	-21.9%
Increases	Subregion	2005	2009	Change
	East Brainerd	20	49	145.0%
	Lupton City/Norcross	37	61	64.9%
	Brainerd	87	140	60.9%
	Westview/Mountain Shadows	33	52	57.6%
	Signal Mountain	14	21	50.0%
	Downtown	269	374	39.0%
	Riverview/Stuart Heights	33	45	36.4%
	Amnicola/East Chattanooga	204	275	34.8%
	Dupont/Murray Hills	98	130	32.7%
	Woodmore/Dalewood	232	297	28.0%
	Hickory Valley/Hamilton Place	128	163	27.3%
	Bakewell	35	44	25.7%
	Hixson	87	108	24.1%
	Soddy Daisy	126	155	23.0%
South Chattanooga	267	324	21.3%	
Dallas Bay/ Lakesite	63	76	20.6%	

Neighborhood Crime: Burglary

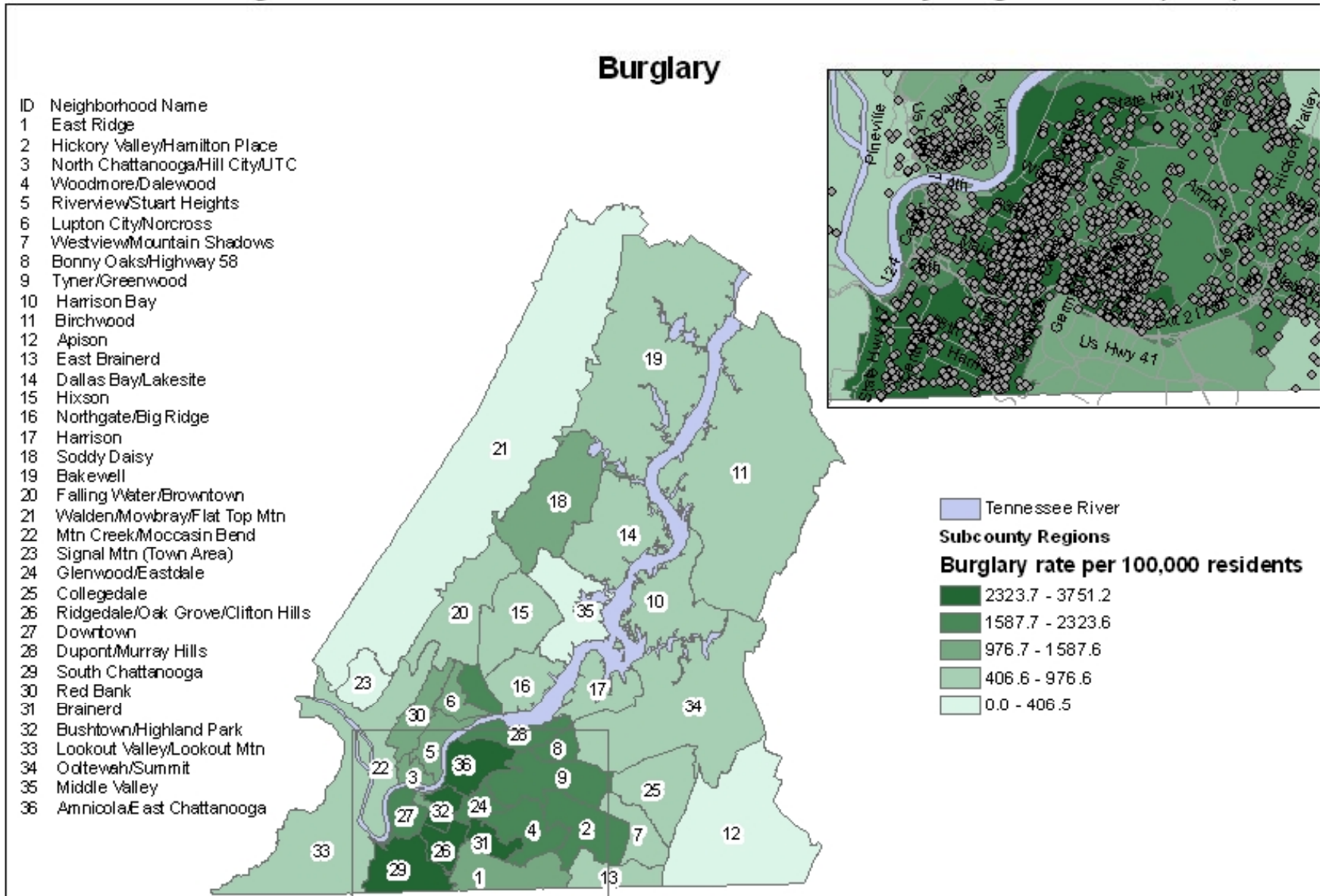
- Top Five Burglary, 2009:

1. Ridgedale/Oak Grove/Clifton Hills - 3,751
2. Amnicola/East Chattanooga - 3,647
3. Bushtown/Highland Park - 3,639
4. Brainerd - 2,889
5. South Chattanooga - 2,825

(Rates per 100,000)

Source: Chattanooga Police Department and Hamilton County Sheriff

Neighborhood Crime Rate Per 100,000 Residents by Neighborhood (2009)



Data from each local police department was not available. Chattanooga Police and Sheriff Department data files were geocoded by address location of the crime and aggregated to the neighborhood level. Approximately 98% of addresses were coded. In some cases, specific address locations were not included in the files or street address locations were not available. For Collegedale, East Ridge, Lookout Mountain, Red Bank, Signal Mountain and Soddy Daisy, complaint data from the 2009 TBI Report was used to supplement data at the neighborhood level.

Neighborhood Changes: Burglary

Decreases

Subregion	2005	2009	Change
Signal Mountain	22	11	-50.0%
Collegedale	142	91	-35.9%
Walden/Mowbray/Flat Top Mtn	36	25	-30.6%
Ooltewah/Summit	84	60	-28.6%

Increases

Subregion	2005	2009	Change
East Brainerd	34	78	129.4%
Amnicola/East Chattanooga	141	296	109.9%
Bonny Oaks/Hwy 58	68	139	104.4%
Dupont/Murray Hills	80	161	101.3%
Bushtown/Highland Park	144	283	96.5%
Woodmore/Dalewood	124	218	75.8%
Brainerd	139	225	61.9%
South Chattanooga	228	358	57.0%
Hickory Valley/Hamilton Place	119	182	52.9%
Apison	25	38	52.0%
Ridgedale/Oak Grove/Clifton Hills	206	313	51.9%
Harrison Bay	26	39	50.0%
Fallingwater/Browntown	47	67	42.6%
Downtown	95	134	41.1%
Glenwood/Eastdale	120	161	34.2%
Riverview/Stuart Heights	56	72	28.6%
Tyner/Greenwood	148	189	27.7%
North Chattanooga/Hill City/UTC	78	99	26.9%
Soddy Daisy	82	104	26.8%

Neighborhood Crime: Vandalism

□ Top Five Vandalism, 2009:

1. Amnicola/East Chattanooga - 3,770
2. Ridgedale/Oak Grove/Clifton Hills - 3,763
3. Downtown - 3,520
4. Bushtown/Highland Park - 3,382
5. South Chattanooga - 2,730

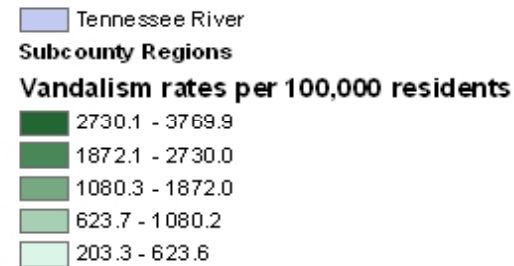
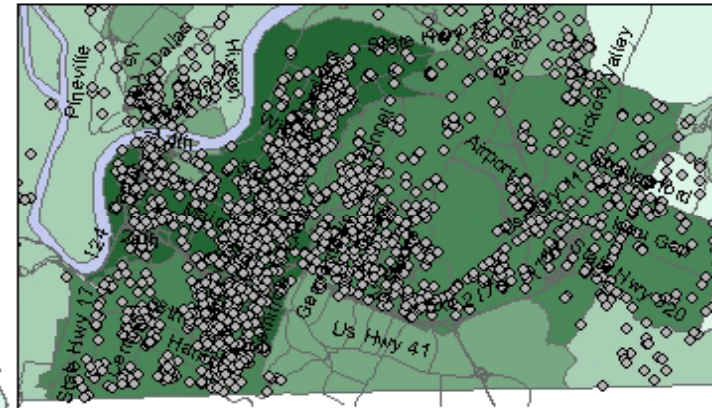
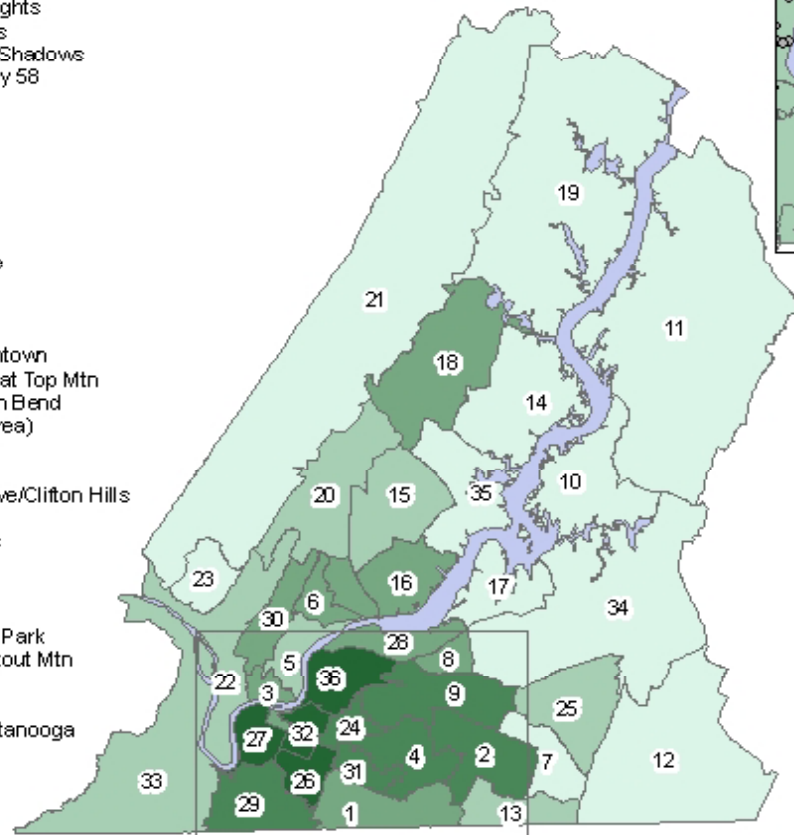
(Rates per 100,000)

Source: Chattanooga Police Department and Hamilton County Sheriff

Neighborhood Crime Rate Per 100,000 Residents by Neighborhood (2009)

Vandalism

- | | |
|----|-----------------------------------|
| ID | Neighborhood Name |
| 1 | East Ridge |
| 2 | Hickory Valley/Hamilton Place |
| 3 | North Chattanooga/Hill City/JTC |
| 4 | Woodmore/Dalewood |
| 5 | Riverview/Stuart Heights |
| 6 | Lupton City/Norcross |
| 7 | Westview/Mountain Shadows |
| 8 | Bonny Oaks/Highway 58 |
| 9 | Tyner/Greenwood |
| 10 | Harrison Bay |
| 11 | Birchwood |
| 12 | Apison |
| 13 | East Brainerd |
| 14 | Dallas Bay/Lakesite |
| 15 | Hixson |
| 16 | Northgate/Big Ridge |
| 17 | Harrison |
| 18 | Soddy Daisy |
| 19 | Bakewell |
| 20 | Falling Water/Browntown |
| 21 | Walden/Mowbray/Flat Top Mtn |
| 22 | Mtn Creek/Moccasin Bend |
| 23 | Signal Mtn (Town Area) |
| 24 | Glenwood/Eastdale |
| 25 | Collegedale |
| 26 | Ridgedale/Oak Grove/Clifton Hills |
| 27 | Downtown |
| 28 | Dupont/Murray Hills |
| 29 | South Chattanooga |
| 30 | Red Bank |
| 31 | Brainerd |
| 32 | Bushtown/Highland Park |
| 33 | Lookout Valley/Lookout Mtn |
| 34 | Ooltewah/Summit |
| 35 | Middle Valley |
| 36 | Annicola/East Chattanooga |



Data from each local police department was not available. Chattanooga Police and Sheriff Department data files were geocoded by address location of the crime and aggregated to the neighborhood level. Approximately 98% of addresses were coded. In some cases, specific address locations were not included in the files or street address locations were not available. For Collegedale, East Ridge, Lookout Mountain, Red Bank, Signal Mountain and Soddy Daisy, complaint data from the 2009 TBI Report was used to supplement data at the neighborhood level. For these police departments, address level data was not available. Census 2000 is the source of population totals.

Neighborhood Changes: Vandalism

Decreases	Subregion	2005	2009	Change
	Westview/ Mountain Shadows	94	41	-56.4%
	Apison	38	19	-50.0%
	Collegedale	137	73	-46.7%
	Bakewell	60	33	-45.0%
	Dallas Bay/ Lakesite	116	64	-44.8%
	Ooltewah/ Summit	110	65	-40.9%
	Birchwood	56	34	-39.3%
	Harrison	66	41	-37.9%
	Harrison Bay	55	35	-36.4%
Middle Valley	51	39	-23.5%	
Increases	Subregion	2005	2009	Change
	Falling Water/Browntown	29	63	117.2%
	Red Bank	87	144	65.5%
	Amnicola/East Chattanooga	216	306	41.7%
	Northgate/Big Ridge	76	103	35.5%
	Lupton City/Norcross	54	72	33.3%
	Riverview/ Stuart Heights	34	45	32.4%

Neighborhood Crime: Drug Offenses

- Top Five Drug Offenses, 2009:

1. Amnicola/East Chattanooga - 4,731
2. Downtown - 2,644
3. Ridgedale/Oak Grove/Clifton Hills - 2,469
4. Soddy Daisy - 2,398
5. Bushtown/Highland Park - 2,366

(Rates per 100,000)

Source: Chattanooga Police Department and Hamilton County Sherriff

Neighborhood Changes: Drug Offenses

Decreases

Subregion	2005	2009	Change
Lookout Valley/Lookout Mtn	91	21	-76.9%
North Chattanooga/Hill City/ UTC	135	38	-71.9%
Bakewell	57	17	-70.2%
Falling Water/ Browntown	41	13	-68.3%
Dupont/ Murray Hills	84	27	-67.9%
Riverview/Stuart Heights	28	10	-64.3%
Ridgedale/ Oak Grove/ Clifton Hills	517	206	-60.2%
Downtown	446	184	-58.7%
Bonny Oaks/Hwy 58	78	33	-57.7%
Woodmore/Dalewood	194	84	-56.7%
Tyner/Greenwood	110	48	-56.4%
Hixson	130	58	-55.4%
Harrison	65	31	-52.3%
South Chattanooga	435	222	-49.0%
Hickory Valley/Hamilton Place	146	77	-47.3%
Northgate/Big Ridge	37	21	-43.2%
Bushtown/ Highland Park	315	184	-41.6%
Apison	7	5	-28.6%
Collegedale	205	147	-28.3%
Brainerd	104	76	-26.9%
Glenwood/ Eastdale	169	125	-26.0%

Increases

Subregion	2005	2009	Change
Soddy Daisy	97	193	99.0%
Red Bank	73	138	89.0%
Signal Mtn	40	65	62.5%
East Ridge	105	169	61.0%
Ooltewah/ Summit	36	55	52.8%
Mountain Creek/Moccasin Bend	44	56	27.3%

Neighborhood Trends: Contributing Factors



- ❑ Shifting crime patterns
- ❑ Changes in policing strategies
- ❑ Population growth
- ❑ Changes in economic or commercial development
- ❑ Incidents with a number of victims
- ❑ Changes in reporting patterns

Subregional Focus

- As in past years, five subregions had the highest crime rates for four or more of the six offenses.
 - ▣ Ridgedale/Oak Grove/Clifton Hills
 - ▣ Amnicola/East Chattanooga
 - ▣ Downtown
 - ▣ Bushtown/Highland Park
 - ▣ South Chattanooga

Percent of All Offenses in Five Subregions

Offense	2005	2009
Robbery	47%	39%
Burglary	25%	40%
Aggravated Assault	38%	32%
Simple Assault	30%	32%
Vandalism	29%	32%
Drug Rate	48%	40%

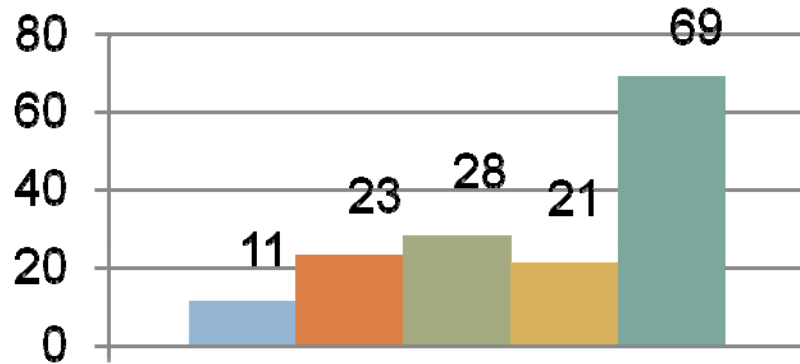
Subregional Focus



- However, a few other subregions have experienced increased crime rates that have placed them in the top five:
 - ▣ Dupont/Murray Hills – Robbery
 - ▣ Woodmore/Dalewood – Robbery
 - ▣ Brainerd – Burglary
 - ▣ Soddy Daisy – Drug Offenses

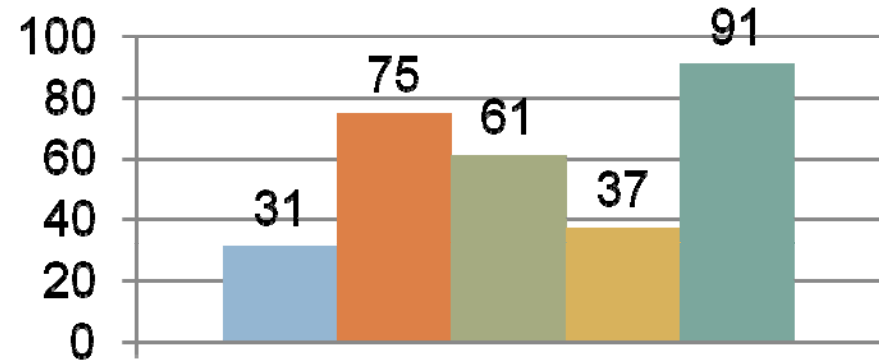
Subregional Focus

Robbery 2005 - 2009



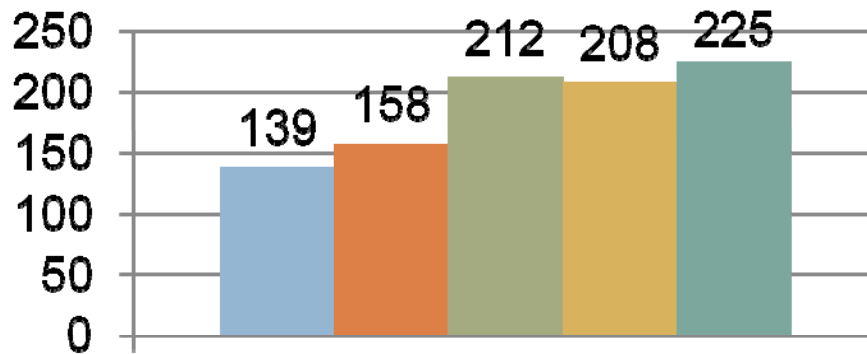
Dupont/Murray Hills

Robbery 2005 - 2009



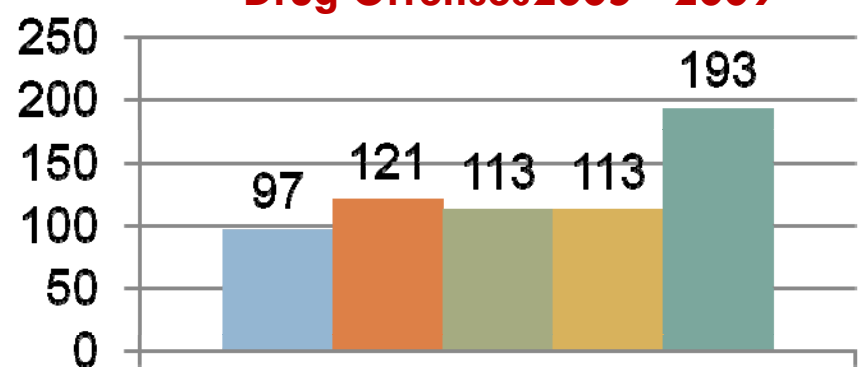
Woodmore/Dalewood

Burglary 2005 - 2009



Brainerd

Drug Offenses 2005 - 2009



Soddy Daisy